

State of Wyoming

# Wyoming Livestock Board Newsletter



VOLUME 17, ISSUE 1

JANUARY 2009

## WE HAVE MOVED!

### Welcome to the NEW Livestock Board!

We have made our long and dusty trail ride to the new office in the Unicover Building, 1934 Wyo Drive. The new location is more spacious and customer friendly. No more fourth floor elevator ride! Driving to the new location is easy with close access to the highway. The parking lot can accommodate any size

vehicle or trailer. We can boast about the new video conferencing system in our board room. Video conferencing will allow the public to attend meetings in or near their own communities, plus it will provide substantial savings in travel and per diem for meetings held throughout the State. Additional savings to the agency will come in the form of rent. The Unicover building is State owned resulting in lower building operating costs and we no longer have to pay for employee parking. We still have some glitches to work out, such as signs directing you to the



building, or a light switch that doesn't work. But these are small and will be worked out over time. We encourage you to stop by and get the grand tour. We can even provide you with a cup of coffee.

By: Dale Bratton



#### Inside this issue:

Protecting Nations Food Supply	2
Vet Loan Program Update	2
Riverton Office Update	2
Equine Viral Arteritis	3
Estray / Abandoned	4
Contagious Equine Metritis	5

#### Special points of interest:

- According to our Law Enforcement unit the current average cost of an abandoned horse case is approximately \$400.00 per animal
- Ms. Milek and Ms. Lowe are preparing for the Feb. 1 Herd Plan 2009 renewals.
- APHIS is currently proposing an effort entitled the National Brucellosis Elimination Zone which would "zone or regionalize" the Greater Yellowstone Area of Wyoming, Idaho, and Montana.

## Where do we go from here with Brucellosis?

The concept of freedom from disease has been used by states and countries for years to facilitate trade and unrestricted movement of livestock. Movement of animals from areas where a disease is known to exist has been regulated in order to prevent the spread of the disease. The United States has employed the system of disease-free states successfully for diseases such as Brucellosis, Tuberculosis, and Pseudorabies for dec-

ades in the eradication programs for these and other diseases. Terminology for this type of disease control effort includes "free status state", "accredited free", and "zoning or regionalization".

It is of paramount importance that all Wyoming producers maintain the ability to market their livestock with minimal but appropriate restrictions. Of equal importance is the

need to protect all producers in Wyoming as well as our trading partner states from purchasing a diseased animal of Wyoming origin. This pertains to any disease that might affect our livestock, whether it be TB, Brucellosis, or others. Relevant to Brucellosis, Wyoming has rules that impose movement restrictions on cattle originating in the Greater Yellowstone Area (GYA) where there is a

Continue Page 3

Pictures taken by:  
Lindsay Johnson

Newsletter Created By:  
Lindsay Johnson  
Animal Health Specialist



## Protecting the Nations Food Supply

Protecting the Nation's agriculture and food supply is an important responsibility shared by Federal, State, local, and tribal governments and private industry. The focus of this article is on private industry, in particular, veterinary medicine and the "One Health Initiative".

A growing awareness of the role of zoonotic diseases, which move from animals to people, has contributed to the One Health Initiative. More than 60 percent of the 1,400 disease-causing agents that affect people originate, or are amplified, in animals.

Diseases such as measles, small pox, influenza, and tuberculosis likely evolved from animal dis-

eases as a result of animal domestication. Zoonotic diseases continue to be an important consideration in all areas of veterinary medicine including companion animals, wildlife, and production animal medicine. Zoonotic diseases represent the leading biological threats to human health. There is a great potential for veterinarians to aid in surveillance for risks to human health. The One Health Initiative is dedicated to improving the lives of all species—human and animal—through the integration of human medicine and veterinary medicine. Whether it is emerging infectious diseases, antibiotic resistance, globalization, natural disasters, or climate change, human and veterinary medical communities

must work together to successfully combat the serious health threats of the 21st century.

With more than 26 billion pounds of beef, 22 billion pounds of pork, 40 billion pounds of poultry meat, and 73 billion eggs sold annually, the United States is the largest producer of meat, poultry, and egg products in the world. All of the food animals have been seen at one time or another by a local veterinarian. Cooperation between medicine disciplines will keep us all much healthier and safer.

By: Dale Bratton

*One Health Initiative is dedicated to improving the lives of all species—human and animal—through the integration of human medicine and veterinary medicine.*

## Vet Loan Program Update

As 2008 closes, there is good news concerning the Wyoming's Veterinary Loan Repayment program. After a review and selection by the Livestock Board, 5 applicants were awarded grants for loan repayment. All of the veterinarians selected are practicing at least 50% food animal medicine in the State.

The recipients are: Dr. Milo Andrus, Afton, Dr. Gretchen Saam, Basin, Dr. Elizabeth

Skavdahl, Rawlins, Dr. Shannon Swist, Laramie and Dr. Amanda Thoet, Worland. All recipients will begin receiving payment as of May 1 2009.

The loan repayment program has been funded for at least another year and applicants for the 2009 year will find a revised application on the WLSB web site. This application will be due May 1 2009.

The programs success will be

dependant on the support of sponsors for new veterinarians wishing to practice in Wyoming. New veterinarians must be willing to practice food animal medicine at least 25% of the time.

The veterinary loan repayment program is new and it remains to be seen if it will be a success, but from all appearances and the interest from across the nation it will be a success. Fred Emerich DVM WLSB Field Veterinarian

## Update from the Riverton Field Office

The Riverton Field Office welcomes Sara Lowe as the new Administrative Assistant. Sara has worked for the Forest Service in both Wyoming and Idaho and the Department of Environmental Protection in Connecticut. She has also worked for numerous ranches in Teton and Fremont Count and has a good working relationship with many area producers. She is looking forward

to working for the WLSB.

Dr. Logan and Ms. Lowe assisted the US Fish and Wildlife Service and the Wyoming Game and Fish Department capture a small herd of elk on the Fossil Butte National Monument. The adult cows were radio collared for movement monitoring, ear tagged and blood and hair samples were taken for DNA and Brucellosis testing.

Dr. Logan met with US Fish and Wildlife and Wyoming Game and Fish Department personnel and arranged an elk capture on the USFWS bird refuge to facilitate Brucellosis testing later this year.

Ms. Milek and Ms. Lowe are preparing for the Feb. 1 Herd Plan 2009 renewals. Plans are expected to remain the same unless management or exposure risks have changed.

## Equine Viral Arteritis—What is it?

Equine viral arteritis (EVA) is an acute, contagious, viral infection of equids. It is characterized by fever, depression, dependant edema (swelling of limbs, scrotum and prepuce), conjunctivitis, nasal discharge, abortion and death in young foals.

After aerosol exposure the virus will spread to blood vessels throughout the body. The resulting damage will cause leakage of the vessels with resultant swelling, dependant edema and hemorrhage. Probable loss of placental circulation may lead to abortion after death of the fetus. The incubation period ranges from 3-14 days and signs can be quite variable in severity.

Transmission of EVA infection can occur by respiratory, venereal, con-

genital or indirect means. Usually respiratory infection occurs at race-tracks, shows, rodeos and breeding farms. Venereal transmission can occur through the breeding of an acutely infected mare to an acutely infected or carrier stallion. Mares can be infected naturally or through artificial insemination with infected semen. The virus can also be transmitted by shanks, twitches, head collars and breeding shed equipment. Some stallions can remain infective throughout their lives even though they are asymptomatic.

EVA resembles several other equine diseases. Equine influenza, herpesvirus 1 and 4, equine rhinitis A and B, adenovirus and streptococcal infections are all very similar in signs. Adequate diagnosis can be difficult but must be done due to

the ramifications of the disease.

Treatment is entirely symptomatic and almost all infected animals will recover completely. As yet, there is no known means of eliminating the carrier state in stallions. Vaccination is possible for breeding animals, but verification of an uninfected state must be done via blood test as infection and vaccination render the same positive results. In Wyoming, importation of equines with infectious disease is not allowed. Therefore adequate documentation of vaccination is essential.

For more information contact the Wyoming Livestock Board at 307-777-7515 or contact the board at <http://wlsb.state.wy.us>.

By: Dr. Fred Emerich



## Where do we go from here with Brucellosis? continued

recognized wildlife source of the disease. Basically, Wyoming has “zoned or regionalized” a defined boundary within its borders requiring testing on female cattle 18 months of age and older within 30 days prior to movement from the area and/or change of ownership. This has been done to try to prevent the spread of the disease from the “risk area”, and has been employed for approximately the past 8 years. These rules also require vaccination against Brucellosis and official identification of female cattle statewide.

The risk of spread of Brucellosis from infected wildlife to cattle in the GYA of Wyoming, Idaho, and Montana places the Brucellosis Free status of each of these states in jeopardy every time an infected cattle herd is found. All three states have endured the loss of free status in the past 5 years which has affected marketability statewide in spite of the fact that the “risk area” is defined and the infection has been locally contained. This has been a “roller coaster ride” for producers and has been very costly to both the cattle industry and state and federal governments.

APHIS is currently proposing an effort entitled the National Brucel-

losis Elimination Zone which would “zone or regionalize” the Greater Yellowstone Area of Wyoming, Idaho, and Montana. A notice will soon be published in the federal register with (probably) a 60 day public comment period on the concept. This concept would allow the area of the state outside the GYA to remain “Brucellosis Free” even if cases of Brucellosis were found in cattle herds within the zone. There would be test requirements for cattle within the zone, possibly similar to what is already required in the Wyoming Livestock Board Chapter 2 Rules. The WLSB and APHIS would conduct a risk assessment on each herd in the area and the test requirements would be dependent on the level of risk found. Livestock identification and vaccination requirements would likely remain the same as current Chapter 2 Brucellosis Rules, and herd plans would be encouraged.

Efforts by the state and federal agencies responsible for wildlife to manage and control risks of exposure and transmission from wildlife to cattle would also be an important aspect of this proposal.

The success of this endeavor will ultimately depend on the ability to maintain common sense and practi-

cality in the requirements of the program. The program must be science based, but must also take into account the many challenges that producers in the risk area face in this issue. The goal should be to eliminate Brucellosis, not to eliminate cattle production in the GYA. While working to protect the cattle industry from the spread of Brucellosis from the GYA, we need to also maintain viable cattle ranching operations in the GYA. This will require government agencies and industry to provide assistance and incentives for producers to be able to comply with their unique requirements as well as providing assurances that “clean” cattle from this area can be marketed on a level playing field with those from other areas.

The scales must be balanced, weighing the benefits of the program against the burdens of the program. The entire cattle industry could benefit from this concept, but only if the viability of the GYA cattle producing operations is preserved through fair, prudent, and practical disease control methods.

By: Dr. Jim Logan

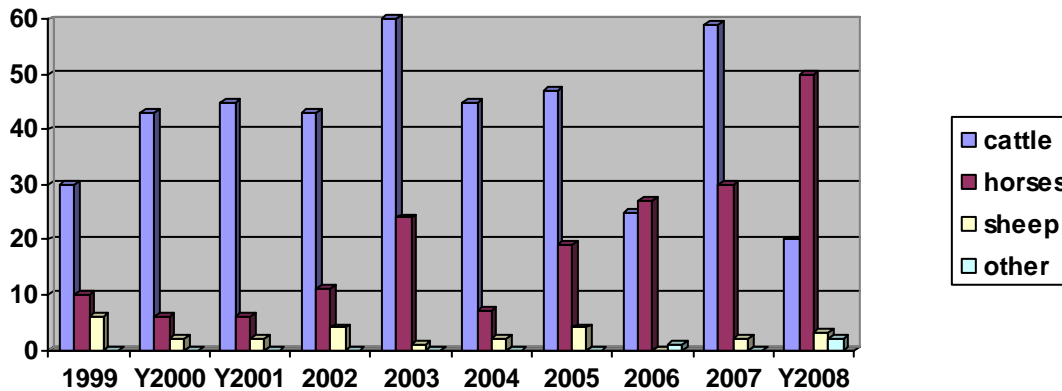


# Estray and Abandoned Animals

## Unresolved advertised Estray comparisons

Year	Total Cattle	Total Horses *	Total Sheep	other
2008	20	50***	3	2
2007	59	30	2	0
2006	25	27	0	1
2005	47	19	4	0
2004	45	7	2	0
2003	60	24**	1	0
2002	43	11	4	0
2001	45	6	2	0
2000	43	6	2	0
1999	30	10	6	0

Note: \* includes asses mules and burros  
 \*\*includes one case of 8 horses  
 \*\*\* includes 2008 abandoned horses taken as estrays



### Summary Analysis on Horse Cases:

From 1999 to 2002 the average number of horses per year was 8.25

From 2003 to 2005 the average number of horses per year was 16.67

From 2006 to 2008 the average number of horses per year was 35.67

The trend for estray/abandoned horses is doubling each of the last two year periods. This is alarming when you realize that it is not unusual to accumulated costs for feed, transportation, care and veterinary medical expenses that can range from several hundred dollars to a thousand dollars per horse. According to our Law Enforcement unit the current average cost of an abandoned horse case is approximately \$400.00 per animal.

By: Lee Romsa

# STATE OF WYOMING

*Wyoming Livestock  
Board  
1934 Wyott Drive  
Cheyenne, WY  
82002*

*Phone: (307) 777-7515*

*Fax: (307) 777-6561*



## Directions to New Office

Please exit College Avenue from I-25, go East to Parsley Boulevard. Turn left (North) approximately half a mile to Wyott Drive and turn left.

Check us out on the  
Web!

<http://wlsb.state.wy.us>

## Contagious Equine Metritis (CEM)

The Wyoming State Veterinarian is advising horse breeders and veterinarians to be aware of a serious equine reproductive disease that has involved several states following an outbreak in Kentucky in December 2008. Contagious Equine Metritis (CEM) can have a significant economic impact on the horse industry.

Seven stallions in Kentucky and Indiana have been confirmed as positive for CEM by the USDA's National Veterinary Services Laboratory. There are currently 92 exposed horses confirmed in 28 different states that are being held under quarantine. An exposed horse is one that was on the index premises in Kentucky and/or one that was bred to a CEM-positive horse. At least 250 additional horses are actively being traced, with owners of those horses located in at least 27 States.

Contagious equine metritis (CEM) is a transmissible, exotic, venereal disease of horses caused by the bacterium *Taylorella equigenitalis*. CEM is highly

contagious. The disease is difficult to detect and control because animals may be asymptomatic. CEM was first diagnosed in the United States on March 9, 1978 on thoroughbred farms in central Kentucky. Thoroughbred horses appear to be more severely affected by the disease than other breeds.

CEM is commonly transmitted directly during live cover breeding between undetected CEM-positive breeding mares and stallions, and indirectly transmitted by artificial insemination or contact with fomites, such as contaminated hands or instruments. Outbreaks can occur at breeding facilities following international horse shipments.

Initial exposure to the disease usually results in infertility. Stallions exhibit no clinical signs but can carry the CEM bacteria on their external genitalia for years. An infected mare may fail to conceive or may rarely spontaneously abort. There are three general degrees of infection in mares: Acute,

Chronic and Carrier. Acute mares have an active inflammation of the uterus causing an obvious thick, milky, mucoid vulvar discharge 10 to 14 days after breeding. Chronic mares have milder uterine inflammation and infection is more difficult to eliminate. Carrier mares have the bacteria established in their reproductive tract and can remain carriers for several months or longer.

Wyoming is NOT currently one of the states with involvement in this case, but we need to be vigilant for the disease and careful about importing breeding horses.

CEM is a reportable disease in Wyoming. Veterinarians and equine owners who suspect that a horse may have CEM or any other foreign animal disease should immediately contact State or Federal animal health authorities. You can reach the Wyoming Livestock Board at (307) 777-6443, or APHIS at (307) 432-7960.

Press Release